

Blumer-Lehmann AG production hall

Gossau, CH



Project details

Client	Lehmann Immobilien AG
Architecture	Blumer-Lehmann AG
Project type	Commercial and industrial
Construction type	Wood element construction
Services	JC
Own products	Fassaden
Construction	2010, 2020
Locality	Gossau
Country	Switzerland

Production optimisation – timber construction factory assembly

Optimisation of Blumer-Lehmann AG's Erlenhof production facility has included the construction of a new production hall for factory assembly that forms part of a comprehensive development concept. This was the first sub-project. The key issues in planning the hall were its dimensions and the conditions of the site, owing to the stream that runs through the company premises. The planning was also set up to enable completion in two separate construction stages. Another complete storey will be added at a later date. The architectural concept was inspired by the appearance of another existing hall on the site. Hence, the facade was also completed in rough-cut, untreated spruce slats. Once the hybrid construction is complete, the hall will have a gross floor area of 6,200 m².

The initial single-storey hall is of hybrid construction and comprises a concrete core built on concrete pile foundations with wood-concrete composite ceilings. A total of 1,220 m³ of Swiss fir and spruce wood was used. The energy for the new production hall will be provided via district heating from the company power plant. The hall was completed in two stages between October 2019 and April 2020. And it is already clear how quick and easy it will be to add another storey on top of the hall, should this be required at a later date.

Specific Contact



Migga Hug

Head of GC & TC Services |
Architectural planning | Switzerland
Member of the Division Management

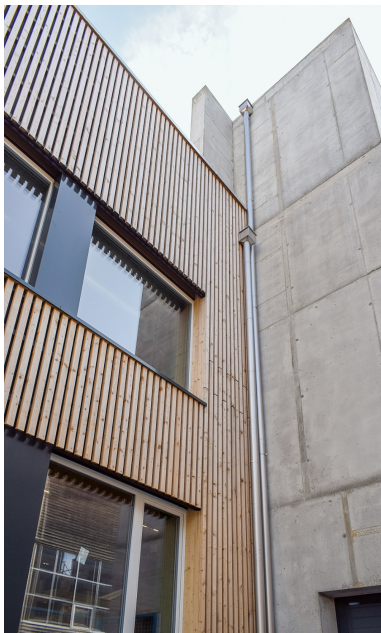
T +41 71 388 58 23
migga.hug@blumer-lehmann.com

Blumer-Lehmann AG production hall

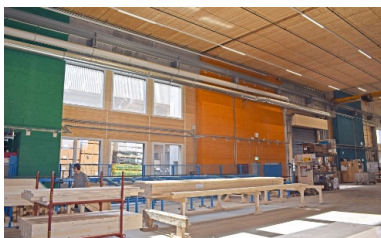
Gossau, CH



Hall construction in impressive dimensions



Clear lines in different materials:
production hall 16 in hybrid construction



The large floor area inside factory assembly hall 16 allows even larger volumes of wood to be processed and the work processes to be optimised.

The spacious hall and state-of-the-art machinery provide ideal conditions for production.